

EVENTS, FILM & PHOTOGRAPHY

SITE WIDE





Welcome to Bicester Heritage. Founded in 2013 as a response to a change in the historic motoring industry, our site is now considered to be the home of historic motoring enterprise in the UK.

We are home to over 50 specialist businesses, acting as a hub of excellence for the classic car industry.

The Heritage Quarter is held as an exemplar of constructive conservation by Historic England, crucially maintaining the look and feel of the nation's best-preserved WW2 RAF Bomber Station.



GETTING TO KNOW BICESTER HERITAGE

In this brochure, you will find details of the facilities and amenities we are able to provide, to meet with your events, photography and videography requirements.

Thanks to the size and nature of our site, we are able to support you with a variety of configurations and indoor/outdoor spaces.

Safety and confidentiality remain at the heart of our operations and we are passionate about providing outstanding customer service and support from the moment that you drive onto our unique location.

REQUEST A SITE VISIT: events@bicestermotion.com



EXPERIENCE AND DEMONSTRATION TRACK

WEST GATE

PADDOCK

HANGAR 113

TECHNICAL SITE

ENGINEERING QUARTER

ORCHARD CAR PARK

MT YARD

THE COMMAND WORKS

MAIN GATE

SOUTH GATE



BICESTER HERITAGE

SITE MAP





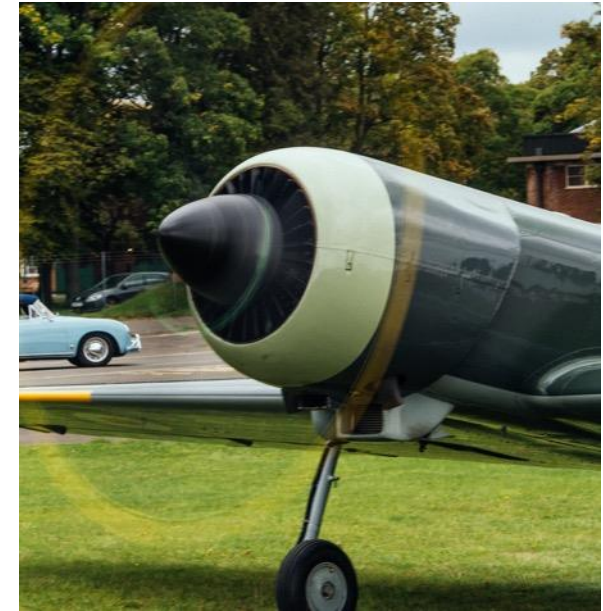
VENUE OVERVIEW

BICESTER HERITAGE HAS SWIFTLY BECOME AN ICONIC VERSATILE BACKDROP FOR AUTOMOTIVE, FASHION AND LIFESTYLE FILM AND PHOTOGRAPHY. WITH OVER FIFTY 1930s BUILDINGS AND WW2 STRUCTURES, THE WARM RED BRICKWORK AND MONOLITHIC STEEL HANGAR DOORS PROVIDE AN INIMITABLE LOCATION UNLIKE ANY OTHER.

Thanks to the sympathetic restoration of our Bicester Heritage location, we can offer multiple cinematic locations within the former RAF base.

Our site can be configured to meet with your event or filming requirements, from the privacy of a 45,000ft² C-Type Hangar, Hangar 113, to our 0.5 mile Experience and Demonstration Track and even our active grass airfield.

GET IN TOUCH: events@bicestermotion.com



OUTDOOR VENUE HIRE

Space

175 acres of well drained open grassland for fly ins and aircraft static display, in addition to outdoor events and parking.

Usage

Grass areas can be used for parking, aircraft or additional activity space. A peri track which surrounds the airfield can be used for driving activities if desired.

While our Hangar provides some 45,000ft of indoor space and accessibility to WIFI throughout, in addition to being connected to the Paddock, ideal for hosting a food court or an outdoor stage.

Access

Access direct from both South Gate (Skimmingdish Lane, Gate 8) and West Gate (Buckingham Road, Gate 5).



HANGAR 113

OUR HANGAR 113 IS AN IMPRESSIVE LOCATION. THE FORMER 1936 GRADE II LISTED WW2 HANGAR IS BECOMING INCREASINGLY KNOWN AS AN ICONIC EVENTS AND FILMING SPACE. TO DATE, IT HAS BEEN USED BY ASTON MARTIN, BMW & MCLAREN, THE MAJORITY OF WELL-KNOWN AUTOMOTIVE MAGAZINES, FOR FASHION PHOTOGRAPHY SHOOTS AND ON OCCASION FEATURE FILMS, INCLUDING 'DARKEST HOUR' AND MOST RECENTLY BATMAN'S PREQUEL 'PENNYWORTH'.

HANGAR 113 – INCLUSIVE WITH HIRE

Space

Providing 45,000 sq.ft. of flexible events/filming space.

Height

30ft. (11m) height from floor to roof.

Branding Opportunity

Dramatic roof structure can be used for lightweight rigging set dressing and lighting.

Access

Excellent access via two roller shutter doors to the north and 4 hangar doors to the south – located close to the South Gate entrance.

Power

Combined 3 phase power, domestic power and overhead house lights.

Facilities

Three toilets and access to a basic kitchen. Two adjoining production offices within the atrium.

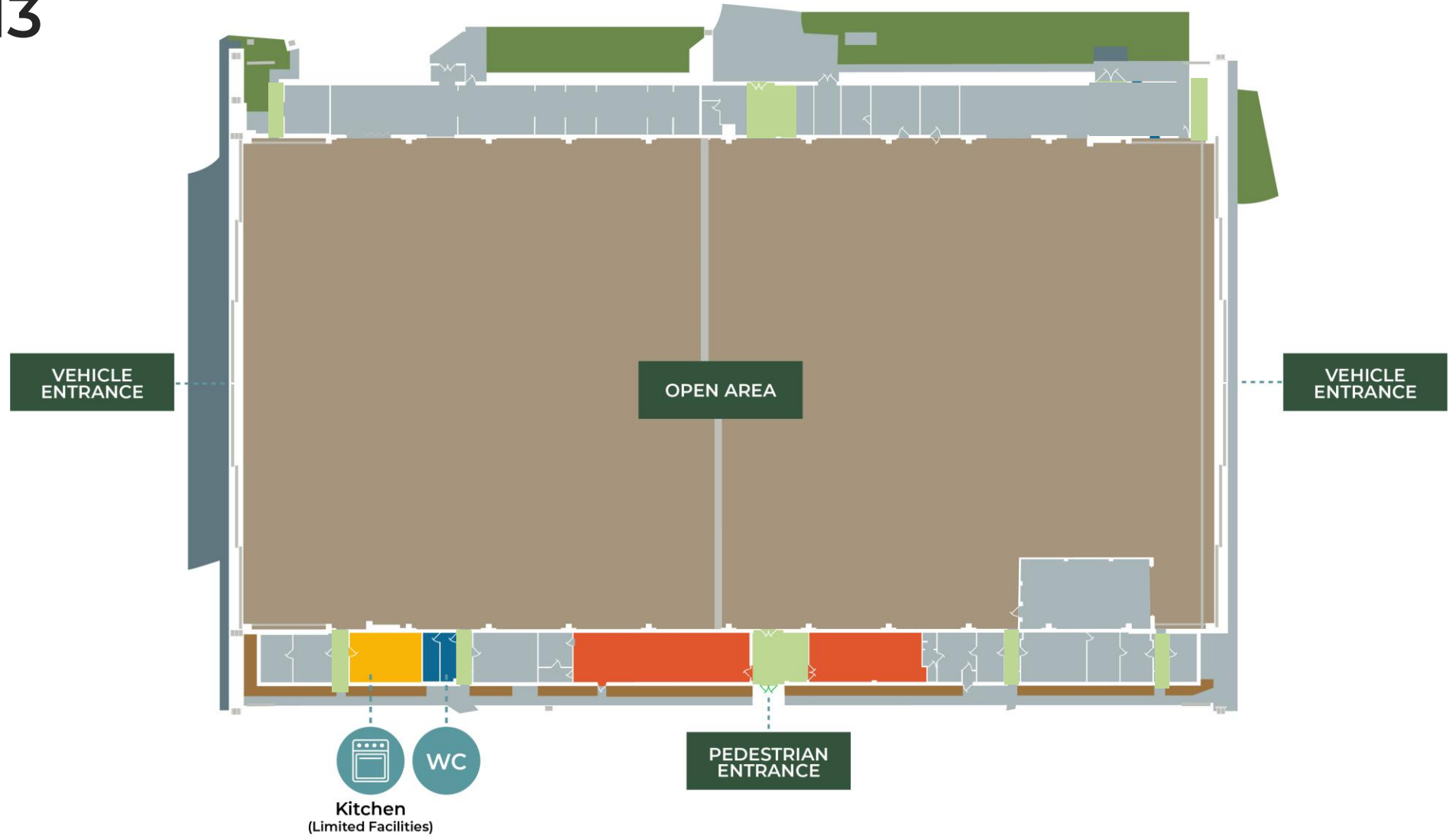
HANGAR 113 – OPTIONAL EXTRAS

- Wireless broadband capability, harnessing up to 100 Mbps.
- The atrium supports high powered WiFi access points with programmable SSID, additional hard-wired connection points are available at separate locations around the building if required.



HANGAR 113

- Open Area
- X2 Production Offices
- Toilets
- Kitchen
- Fire Exits



EXPERIENCE AND DEMONSTRATION TRACK OVERVIEW

TRACK – INCLUSIVE WITH HIRE

- Tarmac surface
- Track length is 0.5 miles (just under 1km)
- Available to run in two configurations, dependent on your requirements;
 - As a loop or figure of eight
- Track features include;
 - 5 corners (when run as a loop configuration)
 - A straight of just over 310m
 - The ability to run clockwise or anticlockwise, as the Experience and Demonstration track on/off can be accessed from two different locations
- The Experience and Demonstration track hire includes x1 Track Marshal safety cover



BUILDING 123: CLUB ROOM

CLUB ROOM

Offering a relaxed space for gatherings or a more formal layout depending on your business needs.

Capacity

- Board Room Style – 8pax
- Theatre style - 15pax
- Standing Reception – 30pax
- Outside terrace included in hire

Facilities

- 55" Smart 4K Ultra HD LED TV
- Wifi access

Catering

On-site options available, please speak to our team for more information.



EXTRAS

Bicester Heritage offers four beautifully appointed Crew Rooms available on site, **bookable** for overnight stays.



BUILDING 123: BOARD ROOM

BOARD ROOM

Offering a space for corporate meetings, away days and presentations.

Capacity

- Board Room Meeting Style – 10pax

Facilities

- 50" Smart 4K Ultra HD LED TV
- Wifi access

Catering

On-site options available, please speak to our team for more information.



EXTRAS

Bicester Heritage offers four beautifully appointed Crew Rooms available on site, **bookable** for overnight stays.





From painstakingly restored brick walls, to the patina of Hangar 113, our Heritage Quarter is a much-loved location for filming and photography shoots.

No time of day is quite the same, making it a magical setting in which to capture your content.

Home to 50 specialist motoring businesses, you never know what you might find outside workshop doors or parked on our tree-lined avenues.



1 EXPERIENCE AND DEMONSTRATION TRACK

FILM & PHOTOGRAPHY LOCATIONS

LOCATION 1: Experience and Demonstration Track

LOCATION 2: Paddock

LOCATION 3: Hangar 113

LOCATION 4: Hangar Doors, Hangar 113

LOCATION 5: Side of Building 112

LOCATION 6: Side of Hangar 79

LOCATION 7: Side of Hangar 137

MAIN
GATE

REQUEST A SITE VISIT:
events@bicestermotion.com

LOCATION 1 – EXPERIENCE AND DEMONSTRATION TRACK



The Experience and Demonstration Track is increasingly known as an iconic driving location, used for film and photography by many manufacturer teams, channels and magazines. It offers you the potential to put a car through its paces in a safe environment.



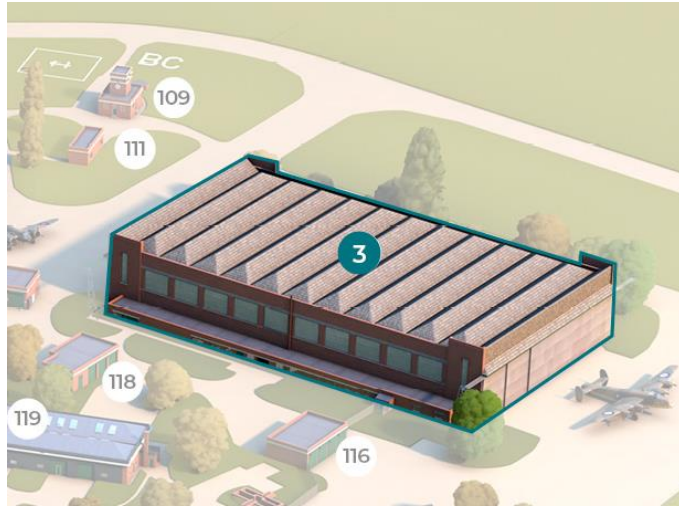
LOCATION 2 – PADDOCK



The Paddock provides a large hard-standing open space with an industrial and untouched decor, this space provides a neutral background ideal for automotive or lifestyle photography.

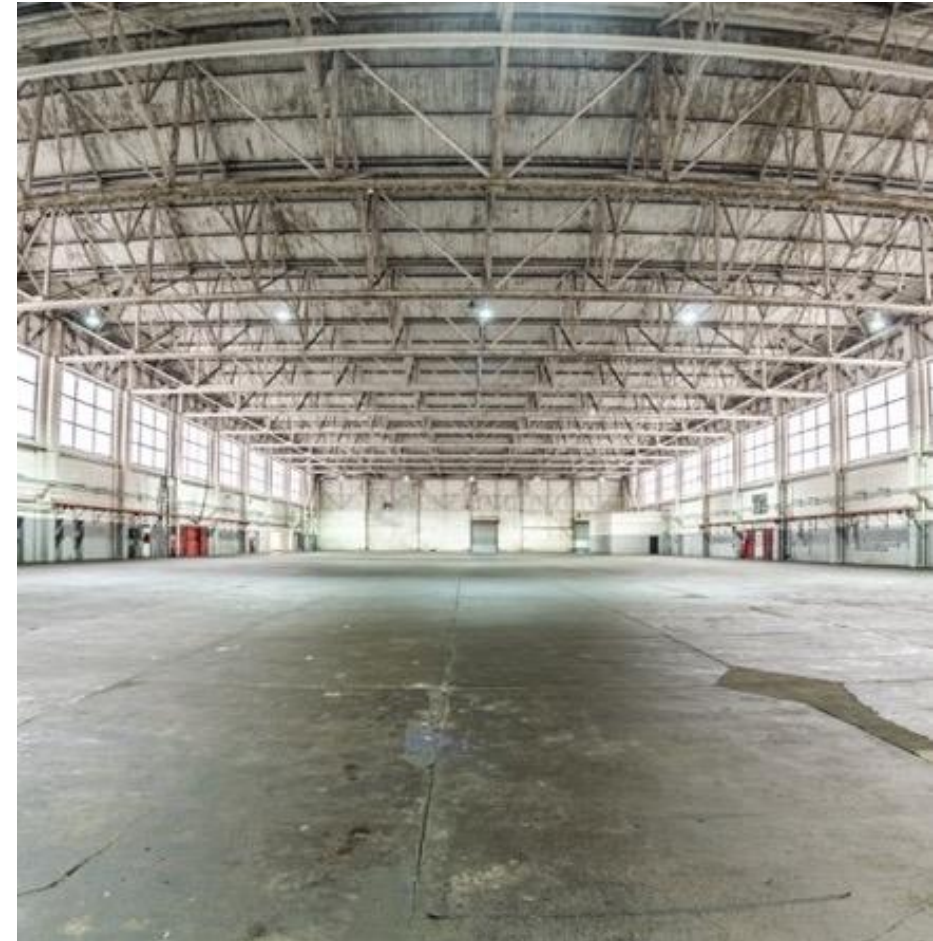
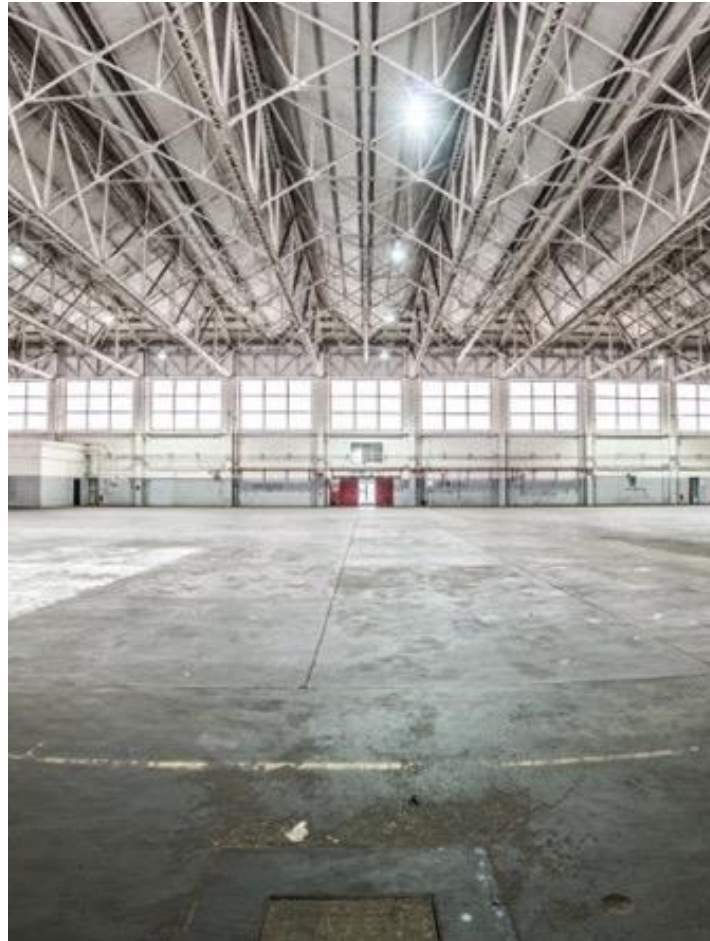


LOCATION 3 – HANGAR 113

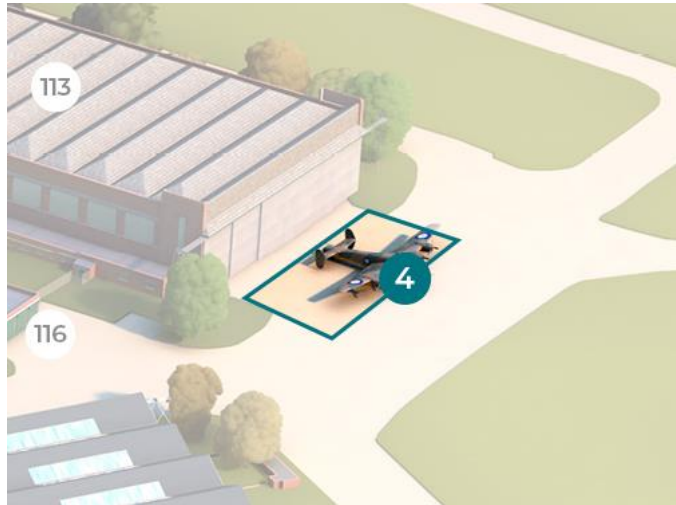


Hangar 113 provides a unique and impressive location with a dramatic steelwork roof structure and 45,000sq ft of covered space.

NB. Please note that the rates for the use of this internal space vary.



LOCATION 4 – HANGAR DOORS, HANGAR 113



Hangar 113 provides a unique and impressive location with a dramatic ironwork roof structure and 45,000sq ft of covered space.



LOCATION 5 – BUILDING 112



Building 112 provides a uniform background, with six dark green roller shutter doors and white dots either side of them



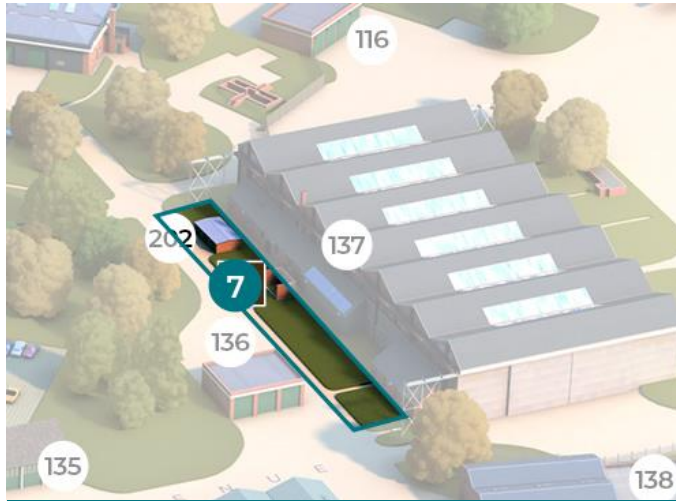
LOCATION 6 – SIDE OF BUILDING 79



Building 79 provides another alternative to Location 3 with some red brick industrial architecture and trees.



LOCATION 7 – SITE OF HANGAR 137



Building 137 provides a unique red brick industrial decor with exposed ironwork.

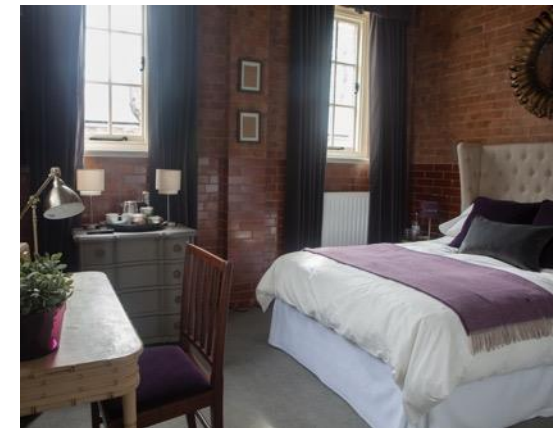


ADDITIONAL INFORMATION

- Additional facilities and spaces can be hired alongside the Experience and Demonstration track, for more information on all of Bicester Heritage's facilities [please visit our website here](#).
- The Heroics Café and AutowaxWorks Café (MT Yard) are open during working hours, offering a range of sandwiches, hot and cold beverages and other options.
- [Historit](#) offers secure, climate-optimised storage for cars, motorbikes and planes. Our vehicle storage facility provides 24hr manned security, great customer facilities and a wealth of expert knowledge, providing peace of mind when it comes to storing your vehicle.
- Formerly RAF Bicester's aerodrome, we now operate an active private airfield with a rich aviation history. Our [Bicester Aerodrome Company](#) base offers private flight, fly-in events and training and experience opportunities with supporting facilities.
- Bicester Heritage offers four beautifully appointed Crew Rooms available on site, [bookable](#) for overnight stays.
- On-site brewery, [The Wiggly Monkey](#), with Tap Room openings on Friday, Saturday and Sunday – catering offerings vary.



GET IN TOUCH:
events@bicestermotion.com



BICESTER – AN UNPARALLELED LOCATION IN THE HEART OF ENGLAND

THE ORIGINS OF THE WORLD'S MOTORSPORT CLUSTER IN OXFORDSHIRE TRACES BACK TO THE PERIOD BEFORE AND IMMEDIATELY AFTER WORLD WAR II. THEY REFLECT A COMBINATION OF: GOVERNMENT SUPPORT FOR AIRCRAFT RESEARCH AND MANUFACTURE IN THE INTER-WAR PERIOD; A CHANGED EMPHASIS IN EARLY PROFESSIONAL MOTORSPORT TO FOCUS MORE ON AERODYNAMICS AND WEIGHT REDUCTION; AND A SHIFT TO RACING ON DESIGNATED CIRCUITS WHICH WERE ESTABLISHED ON DISUSED AIRFIELDS (SUCH AS THAT AT SILVERSTONE AND GOODWOOD).



BICESTER – AN UNPARALLELED LOCATION IN THE HEART OF ENGLAND

A ROMAN SETTLEMENT TURNED MARKET AND GARRISON TOWN IS NOW ONE OF THE FASTEST GROWING COMMUNITIES IN EUROPE WITH EXCELLENT TRANSPORT CONNECTIONS:

- Two Bicester motorway junctions on the M40.
- Two railway stations, Bicester North and Bicester Village providing north, south, east and west connectivity.
- Seven trains an hour to London Marylebone.
- 30 miles from the M1 motorway and situated within the Ox-Cam Technology Corridor.
- Surrounded by five international airports.

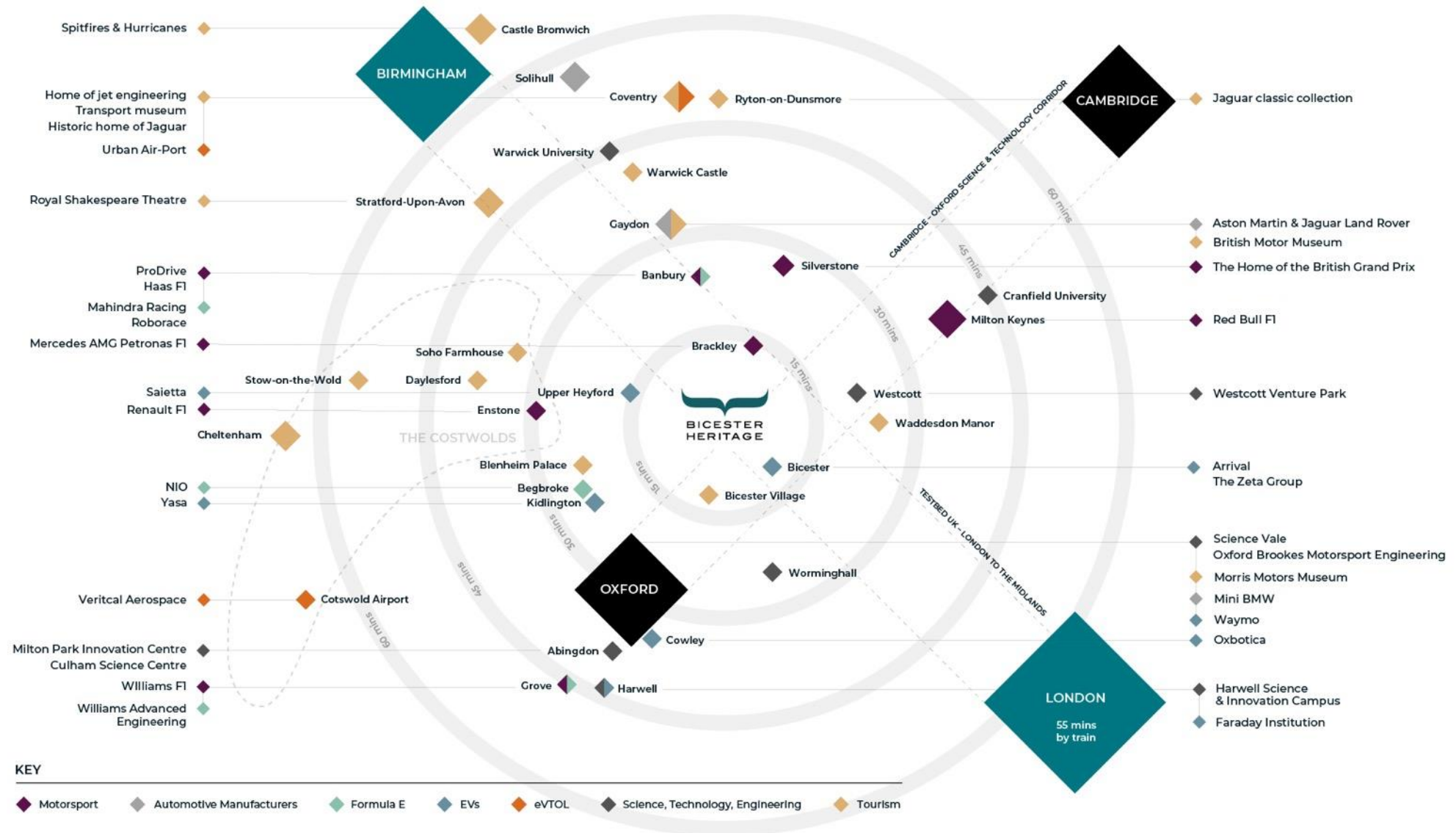
SITUATED IN THE GLOBALLY KNOWN COUNTY OF OXFORDSHIRE:

- c. 26.7 million visitors to Oxfordshire on an annual basis.
- Spending £1.86bn in the local economy.
- The world renowned City of Oxford is less than 30 minutes from Bicester Heritage by car or 15 minutes by direct rail link from Bicester Village.
- Silverstone Circuit is 13 miles away by road.
- Stowe House, one of the most visited National Trust properties, is 10 miles away.
- UNESCO World Heritage Site, Blenheim Palace, is 12 miles by road from Bicester Heritage and Waddesdon Manor is 13 miles.
- 15 miles from Soho Farm House.

1.9 MILES FROM THE MOST VISITED TOURIST ATTRACTION IN THE UK OUTSIDE OF LONDON – BICESTER VILLAGE:

- ‘Bicester’ is a globally recognised brand.
- 6.4 million international visitors per annum.
- A plethora of ultra high net worth individuals

BICESTER – AN UNPARALLELED LOCATION IN THE HEART OF ENGLAND





“A PETROLHEAD’S PARADISE... DEDICATED TO THE FUTURE OF THE PAST, BICESTER HERITAGE IS ON THE CUSP OF SOMETHING TRULY SPECIAL – RIGHT HERE IN OUR COUNTY.”

The Oxford Mail



“BICESTER HERITAGE IS A COMMITMENT TO THE FUTURE OF THOSE YOUNG APPRENTICES AND THE INDUSTRY, REFLECTING THAT WHICH OWNERS PUT INTO THEIR CLASSICS.”

This is Money



THE FUTURE: BICESTER MOTION MASTERPLAN

Heritage

The award winning first phase of development focused on heritage automotive.

Innovation

Dedicated to innovative business within the transport and mobility industries.

Experience

An immersive environment for leading motion brands to showcase new technologies and products, as well as providing experiential leisure activities with a range of new tracks and an off-road course.

Wilderness

A wilderness park, promoting health and wellbeing with outdoor activities in the Oxfordshire countryside.





Bicester Heritage



@BicesterH



BicesterHeritage



BicesterHeritage